

NSG¹

Developed by dhp11, this MicroStation² add-on provides a set of tools which allows a National Street Gazetteer (NSG) dataset to be easily accessed.

NSG MAP TILES

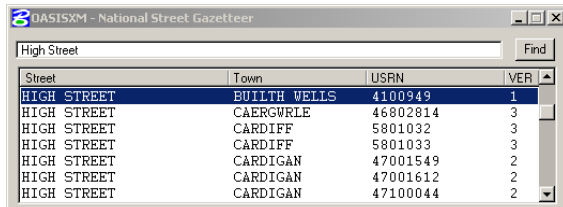
The NSG is a list of all streets compiled by the responsible highways authorities of England and Wales.



The dhp11 NSG mapping tools allow the navigation and display of the NSG road network for the available NSG dataset.

STREET INFORMATION

The NSG Street Gazetteer 'front-end' provides a search facility allowing the user to interrogate the available NSG records and retrieve details for all matching 'streets', 'roads' or 'highways'.

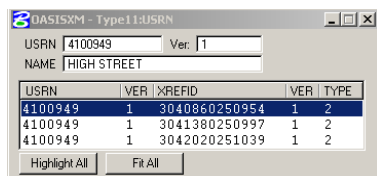


All streets shown can be uniquely identified by use of a Unique Street Reference Number (USRN).

DISPLAY STREET LOCATION

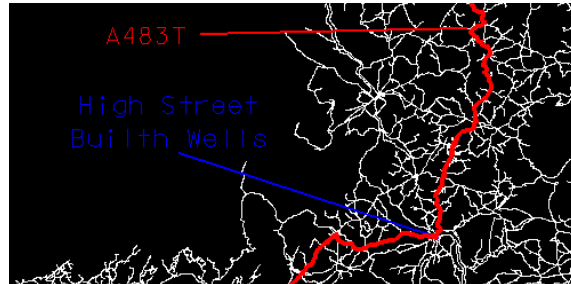
By selecting a street from the displayed list the user is able to:

- * Display a list of street sections that make a specific road/highway
- * Highlight and fit the selected street/road/highway within the NSG map tile



Shown below is an example of the 'highlight' and 'fit' facilities.

This section of an NSG map tile shows that the road 'High Street' (shown in blue) is part of the highway A4831 (shown in red):

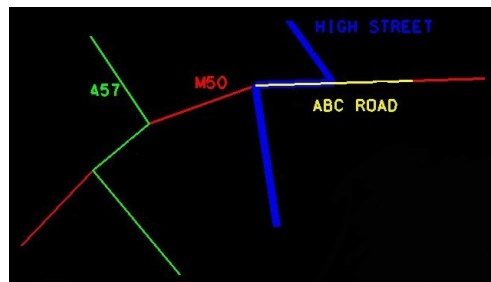


INDIVIDUAL STREET SECTIONS

A street, road or highway displayed within a NSG map tile is 'made up' from a number of unique street sections called Elementary Street Units (ESU's).

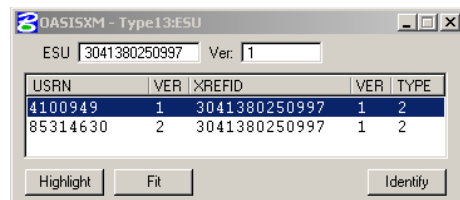
It is possible that a unique street section (ESU) is common to (i.e. used by) a number of different streets, roads or highways.

The image below shows how the roads 'ABC Road', 'High Street' and highway 'M50' all share the same street sections.



The ESU dialog displays the unique identifier (ESU) of each street section along with the USRN of any other streets, roads or highways that share the same street section (ESU).

An 'Identify' option allows the user to query a specific street by selecting a street from the NSG map tile.



As before, options allow the user to highlight and fit all roads, streets or highways that use the the identified street section (ESU).

MORE INFORMATION

For more information on NSG see www.thensg.org.uk.

For more information on the dhp11 NSG add-on for MicroStation email derek.hunter@dhp11.com or telephone 01142 899393.

1 "NSG" National Street Gazetteer
2 "MicroStation" is a trade mark of Bentley Systems Inc.